

## A Sample Daily Curriculum for Musical Theatre

Monday through Friday

### ★ Full Day

Age groups: (6-8) / (9-12) / (13-18)  
Beg /Adv Beginner / Int. / Advanced

Time	Description
9:00-10:30	Musical Theatre Dance/Ballet/Jazz Technique Class/
10:30-11:30	Variations/Jump & Turns/Voice
11:30-12:30	Character and Play Reading Class/Jazz/Modern/Voice/Acting
12:30-1:30	Dance History/Lunch/Video
1:30-2:30	Choreo/Tap /Musical Theatre
2:30-3:00	Staging-Memorization/Play Production Rehearsal

### ★ Half Day

Creative Musical Theatre  
Ages 3-4 and 5-6

Time	Description
9:00-10:00	Ballet/Creative/Song & Dance
10:00-10:30	Snack/Bathroom Break/Video
10:30-11:00	Tap/Musical Theatre/Music
11:00-11:20	Dance/Acting/Song/Dance
11:20-11:30	Juice/Water Break
11:30-12:00	Dance/Arts and Crafts Show/Dance Rehearsal

Performance at the end of each session for parents and friends!

#### General Information:

Sign up online at [www.pspadancer.com](http://www.pspadancer.com). Your confirmation/info/waiver signature packet will be sent by email, as soon as we receive your online-registration and \$200 non-refundable deposit to hold your spot. Camp balance is due by 06/01. After 06/01 tuition is paid in full only. Campers should arrive between 8:50am to 9:00am to begin promptly at 9:05. Campers are asked to bring a drink, snack and pack their own lunch. A shower, kitchen, refrigerator, water machine, & microwave are provided. Please remember to bring a towel to sit on and \$1 each day for a water bottle. The end of each session concludes with a final class performance open to parents and friends!

REMINDER: The balance for tuition is due by June 1, 2011.

## PSPA Innovative Summer Musical Theatre/Dance Workshops

Do you have a young Hamlet at home?  
Is there a future Annie growing up in your midst?

Are you on the hunt for something entertaining yet educational for your young theatre enthusiast this summer?

Our expert faculty opens the gateway to artistic expression through quality instruction.

Be part of PSPA's very exciting musical theatre summer camp workshops.

Boys and girls of all ages will find a place in the spotlight this summer in these wonderful and unique opportunities.

Each summer PSPA offers fun summer camps for boys and girls of all ages! Classes include singing, acting, improvisation, musical theatre and dance movement. All camp sessions conclude with a performance for family and friends on the last day of camp. Come join PSPA Summer Dance and Musical Theatre Workshops where every child is a Star!

Small class size! Only 15 slots per group available. Each and every day for the past 14 years, SIMBT/PSPA mission is to inspire and educate young performers to be their best. We strive to provide hope and vision to those who dream of greatness.

The PA School of the Performing Arts Program mission is to enhance the full creative development of our youngest students. Our expertise lies in knowing how to bring out the best in your child and encouraging them as they delight in their accomplishments.

JOIN US for a customized curriculum that provides your child with the tools necessary for success.

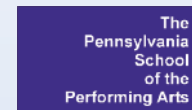
Requiring only a short-term commitment, these workshops provide students with the opportunity to improve technique and performance skills.



Sign up online at:

[www.pspadancer.com](http://www.pspadancer.com)

Call 215.598.8513 For Information!



The Pennsylvania School of the Performing Arts/  
Spirit in Motion Ballet Theatre

2324 Second Street Pike  
Wrightstown, PA 18940



Location:

PSPA classes are held in the historic and beautifully renovated Barn Studio. Located at The Gathering Shopping Center at 2324 Second Street Pike, Wrightstown, PA. On the corner of Penn's Park Road and 2nd Street Pike. In between Rt. 413 North and Swamp Road. Minutes from Newtown, Richboro, New Hope and Doylestown, PA.



Design donated by: Mary Tedesco  
[www.88create.com](http://www.88create.com)



Boys & Girls  
Summer Dance/  
Musical Theatre  
Workshops

2 Great Camps To Attend!

Summer Dance/Musical Theatre  
Workshops July 11th-22nd

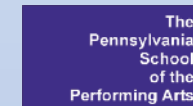
PSPA 4-Day Summer  
Ballet/Zumba Workshop  
4-days: August 22nd-25th

Song & Dance • Jazz • Acting  
Ballet • Voice • Musical Theatre

There will be a performance at the end of each week for parents and friends!



Easy sign up online!   
[www.pspadancer.com](http://www.pspadancer.com)



The PA. School of the  
Performing Arts  
215.598.8513



**PSPA 2011 Summer Tuition and Dates for our exciting summer performance programs:**

★ **Half Day**

**Musical Creative Beginners:**  
Ages (3-4) & (5-6)

**Half Day Creative Musical Summer Camp**  
9am-12:00pm - July 11th-15th \$186

**Song & Dance selections from Disney & Broadway**  
9am-12:00pm - July 18th-22nd \$186

*(There will be a \$15 fee for all materials, arts and crafts.)*

★ **Full Day**

**Musical Theatre: Ages (6-8) / (9-12) / (13-18)**  
Beg /Adv Beginner / Int. / Advanced

**2 Week Camp!**

9am-3pm  
July 11th-22nd  
\$532

*Campers are required to take both weeks of the camp so they can participate in the performance on the last day of the session (July 22nd)*

*(There will be a \$15 fee for all materials, arts and crafts.)*

★ **NEW PSPA** ★

**Ballet/ Zumba Workshop**

**August 22nd - 25th**

**Ages (8-11)**

9am-12:30pm August 22nd - 25th \$210

**Ages (12+)**

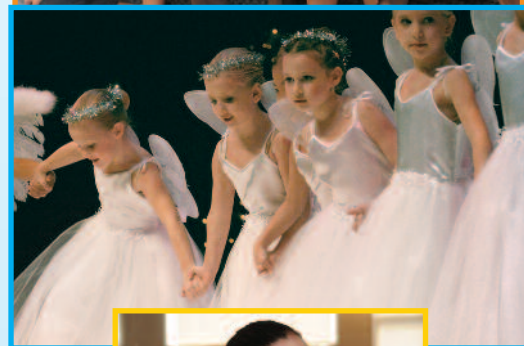
1pm-5pm August 22nd - 25th \$240

**Summer brings a free schedule!**

PSPA is excited to invite beginner and inter/advanced students interested in developing their technique skills will love this "get back in shape" Ballet/Zumba seminar. This Workshop will be challenging for all Levels. The workshop will include technique class, pointe class or pre-pointe for those not on pointe, jumps and turns for boys. Pilates techniques will be used to increase flexibility and Zumba techniques will be used to develop core strength and cardio. You won't want to miss this fun 4 day workshop!

**Enroll now!** Our dance camps ALWAYS fill up quickly, so don't delay. There are a limited number of openings! Our camps are one of the most popular summer events in Bucks County!

Go to [www.pspadancer.com](http://www.pspadancer.com) to reserve your spot in one of our AWESOME dance camps!



Easy sign up on line!

[www.pspadancer.com](http://www.pspadancer.com)

**PSPA Instructors**



**Terri Garcia-Lee: AEA/SAG/AFTRA** ★

Artistic Director/Founder Master Class Instructor. Mrs. Lee made her Broadway Debut with The Tree Musketeers /Revival of "West Side Story" with the amazing late Mr. Jerome Robbins. She has been coaching and teaching children for over 30 years. She has worked with such greats as: Jerome Robbins, Bob Fosse. She received scholarships at the prestigious North Carolina School of the Arts, San Francisco Ballet, Pennsylvania Ballet, Joffrey Ballet and The Broadway Dance Center.

**Tracey Chebra Soprano:** Teaches voice at Westminster Choir College and is currently head of the voice department there.

**Kim Andrus:** Kim received a BFA in Musical Theatre from Ithaca College. She has worked upon the Disney Wonder sailing the caribbean and performing in their nightly stage productions. Kim combine's her passion for the arts and working with children and is a private vocal teacher.

**Nora Minno:** Nora began her dance training at age 7 at SIMBT, under the direction of Terri Garcia-Lee. There, she received professional training for 10 years from members of the Bolshoi Ballet, New York City Ballet, American Repertory Ballet, as well as various Broadway performers.

**Ali Maxwell:** Alison Maxwell ARAD RAD RTS RGN Registered Nurse was born in London, England and with Dublin City Ballet Company, Ireland. Alison is a Registered Teacher Status with The Royal Academy of Dance in London.

**Paloma Garcia-Lee:** Paloma just closed the record setting Broadway national tour of The Phantom of the playing Meg Giry. Paloma is a graduate of the North Carolina School of the Arts in both the acting and dance departments. Paloma joined the Broadway company of PHANTOM at the young age of 17. Paloma has studied with American Ballet Theatre, Princeton Ballet, Complexions & Steps on Broadway.



**Small class size!**  
**Only 15 slots per group available.**

**Information: Space is limited!**

A non-refundable Deposit of \$200 is due at time of registration to hold your spot. Only 15 student slots are open per age group! The tuition, both as deposit and balance, and registration fee are non-refundable. A 5% discount is offered to families who enroll more than one child. Please note that Visa and MasterCard are accepted online and you can mail your check or bring your payment in to our studios. Please complete your registration online or mail in your form and/ or drop off your deposit at our studios. Mail your form to: PSPA Summer Workshops 2324 Second Street Pike Wrightstown, PA 18940.



**Sign up online or please call**  
**215.598.8513**

**if you need more information log on to**  
**[www.pspadancer.com](http://www.pspadancer.com)**

**After and before care available for an extra fee.**  
**Call 215.598.8513**

**Day Rates/Single Classes available, call for pricing!**

**Call about Summer Private Lessons**  
**with Director Mrs. Lee! Sign up now!**

**Summer Registration \$35.00 for non-member**